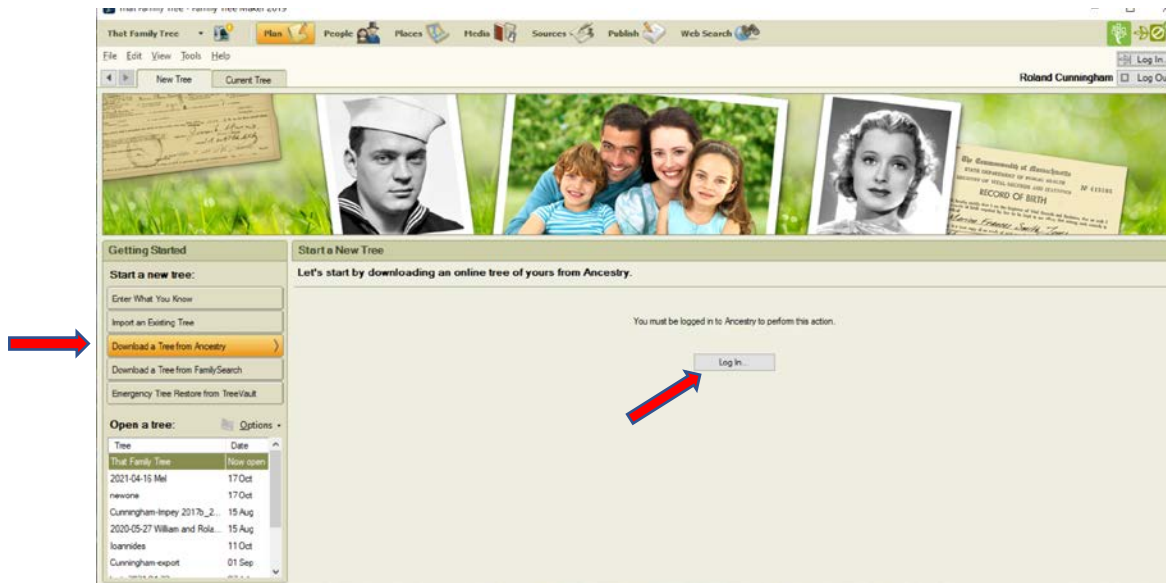


Sync tree between Family Tree Maker 19 and Ancestry

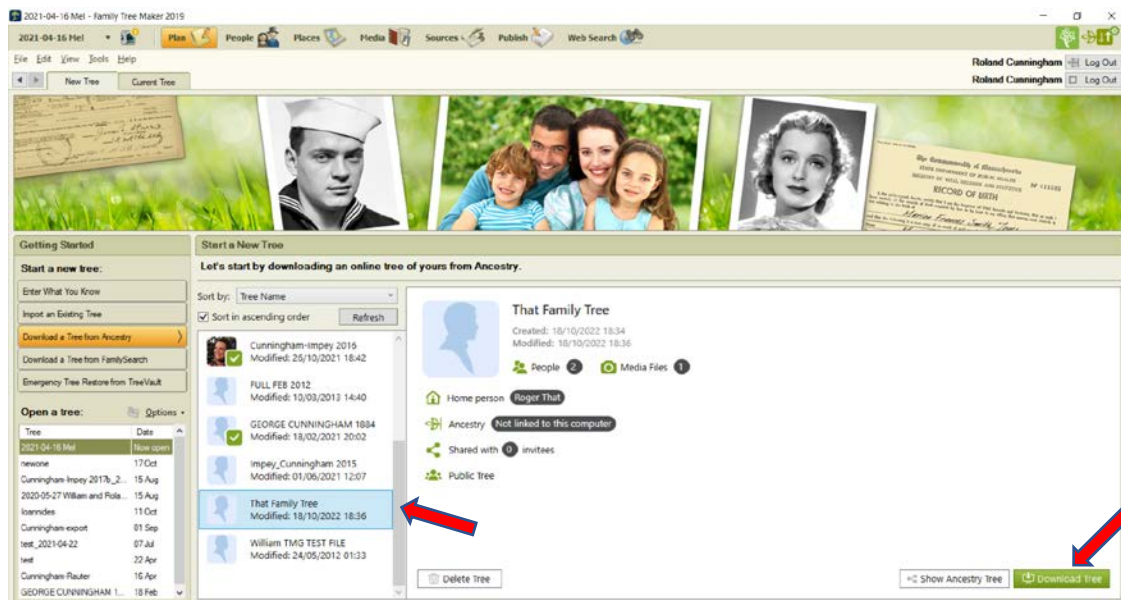
Need to start a new tree in FTM.

Choose 'Download a Tree from Ancestry' (ignore the list of trees that I am showing from my copy of FTM in bottom left corner – yours will be empty if this is the first time you are using FTM)

A prompt will appear if you are not logged in to Ancestry



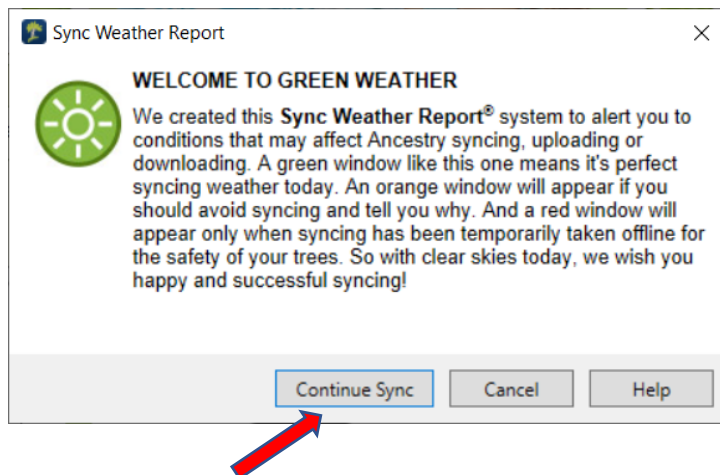
Then Log into Ancestry



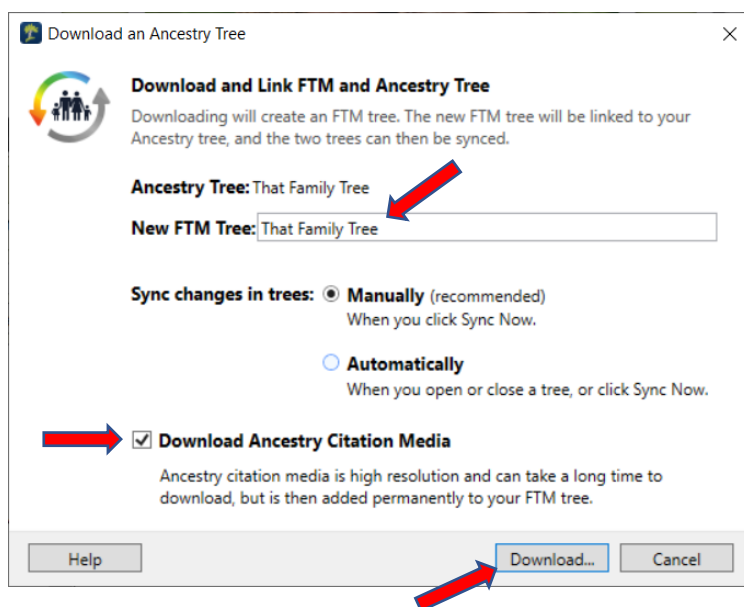
A list of trees that you have in Ancestry will appear. I have chosen 'That Family Tree'. This will then show how many people and how many media files are associated with that file. (my test file is just two people and one media file)

Then press 'Download Tree' (button in bottom right corner)

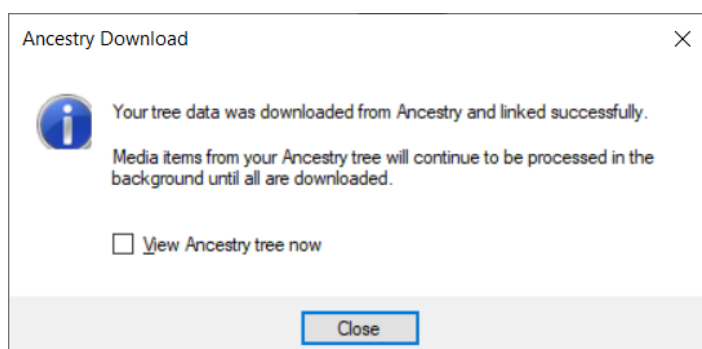
A Prompt will appear called Sync Weather Report. If GREEN then press 'Continue Sync'. Sometimes there is a technical issue and you get a red or amber weather report. It would be best to not continue and wait a while – repeat the steps above until you get a GREEN.



You then get another prompt. You might want to change the FTM tree name. DO TICK the 'Download Ancestry Citation Media' box. Then press the 'Download' button.



You will then get a prompt that the data is transferred, and the media is being downloaded. This might some time depending on how many pictures, etc that you have.



Your tree should then appear in FTM.